

NEW! 2012 Fabric Collection

- Choose from countless fabrics and designs that transition from classic to contemporary.
- Available as privacy curtains, shower curtains, bedspreads and window treatments.
- Fabrics are available in many designs to match your décor and price levels to meet your budget.
- All fabrics have passed fire safety standards and are manufactured by many top-tier vendors.

Custom fabrics from leading vendors available!

ArcCom
Architex
Knoll Textiles
Maharam

Coral
Momentum
Design Craft
DesignTex
Integra

Panaz
Interspec
Tanatex
Master Fabrics

Fabric Overview



EnviroGT™ Fabrics

Alfresco	140
Boxy	139
Courtyard	140
Mesa	141
New Leaf	139
Plaza	141



Gold

Blossom	150
Endless Summer	150
In The Groove	151
In The Moment	149
Isabella	153
Midnight	152
Mosaic Vine	151
Riverstone	149
Shadow	152
Star Flower	154
Streamers	153
Sun Prairie	154



Shower Curtains

Chalet	167
Super Bio Stat	164

Hookless Shower Curtains

Boxseat	165
Encore	165
Ticket	165



Shield by Panaz™ Fabrics

Bristol	130
Bubbles	129
Chelsea	130
Dorchester	133
Elegant Leaf	131
Gentry	131
Kensington	132
Lancaster	132
Lea	128
Mayfair	133
Nottingham	134
Outline	137
Playtime	129
Radical	128
Reflect	136
Tableau	137
Tudor	134
Viewpoint	137
Vista	136



Platinum

Audobon	142
Blissful	142
Boulevard	143
Broadstripe	143
Cityscape	144
Daydream	144
Estate	145
Evolution	145
Gossamer	146
Imprint	146
Rings	147
Sea Life	148
Tile Works	148
Wildflower	147



Silver

Braids	155
Florence	156
Patio	157
Terrace	158
Tiles	155
Wild Ivy	158
Windsor	157
Zahara	156



Bronze

Boardwalk	159
Honeycomb	160
Orbitz	159
Simplicity	161
Sussex	160



Bedspread and Window Treatments

Bentley	181
Castle	179
Checkers	179
Circus	182
Empire	180
Eternity	183
Highbrow	178
Juneau	176
Kilbourn	177
Kozmo	182
Mitchell	176
Moody Stripe	180
Satin Stripe	181
Tuxedo Diamond	178
Tranquility	183
Walker	177
Sheers	173

Patterns may be discontinued without notice. Please call to request an actual fabric sample and to verify availability before ordering. Additional fabrics are available upon request. When standard fabrics are specified, InPro quotes Bronze Collection fabrics.



shield™ by Panaz®

protective intelligent fabric

Shield by Panaz™ fabrics help reduce cross-contamination while being highly resistant to most stains

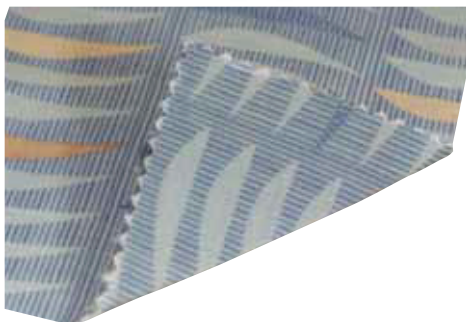
Shield by Panaz™ is antimicrobial and stain resistant fabric for use as cubicle curtains, window treatments and bedspreads. Shield combines active antimicrobial properties with stain resistance for easy maintenance. It incorporates Aegis Microbe Shield resistant technology. Contact an InPro sales representative for test results.

Take the
Shield
Challenge!

Drop a liquid onto a
Shield fabric swatches
& experience the
superior stain resistance!



Shield Classic Fabrics



- **Shield Classic fabrics** provide sturdy construction and a tactile matte finish.
- Patterns are printed on front and back sides of fabric.

Shield Designer Fabrics



- **Shield Designer fabrics** are available with a *satin luster and softer feel!*
- Offers a pattern view from both sides.

Shield Perspectives Fabrics



- **Shield Perspectives fabrics** are woven and feature the same technology you've come to expect from standard Shield fabrics.
- Offers a pattern view from both sides.

Shield by Panaz™ Fabric | Return on Investment (ROI) Analysis



Facility: Westchester Medical Center; Valhalla, New York

Shield fabrics can drastically reduce the overall cost and time associated with changing out curtains by eliminating the need to take down the curtains for routine cleaning.

The following is an actual example of cost savings experienced by one InPro customer after installing Shield cubicle curtains in their facility:



Curtain Type	Shield by Panaz™ Cubicle Curtain	Standard Cubicle Curtain
Laundering (\$5.50/curtain pair)	\$0	\$11,500
Staff time/labor (15 minutes/curtain change; \$30,000 annual salary)	\$0	\$8,400
Lost Revenue due to room closure (average daily charge \$5,678 ¹)	\$0	\$119,238
Total Cost	\$0	\$139,138



Westchester Medical Center, Westchester, NY
A. Shield Cubicle Curtain in Tudor Fabric p.134

Total Cost Savings:



Despite the fact that the initial expense for Shield curtains was more than standard curtains, this facility estimated an initial year **cost savings** of

\$50,612

This facility also estimate an additional **\$139,138 could be saved** every subsequent year due to reductions in labor, laundering and room closure time associated with not changing curtains for isolation rooms.

These savings may vary per hospital depending upon the number of isolation discharges per year.

ADDITIONAL COST SAVINGS:

- Reduced energy costs from less laundering 
- Reduced chemical (detergent) costs 
- Reduced time/labor costs associated with washing curtains
- Reduced risk of safety incidents from installation

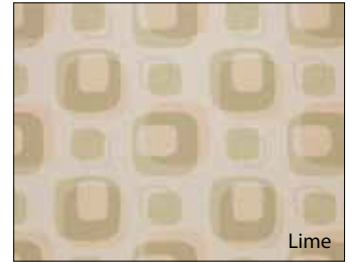
¹ <http://hcupnet.ahrq.gov/HCUPnet.jsp>

NEW! Radical

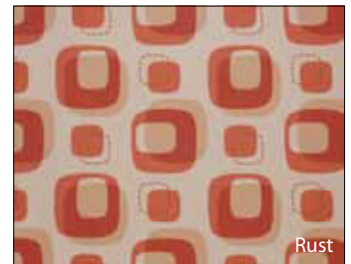
Width: 72" fabric
 Repeat: 25.2"H x 25.2"V
 Shown: Railroaded
 Non-Woven: 100% flame retardant polyester modified with molecular antimicrobial and water repellent technologies.
 Available as:
 Shield Classic Only



Aqua



Lime



Rust



Natural

NEW! Lea

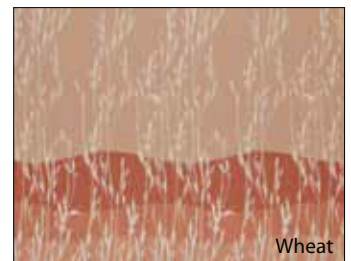
Width: 72" fabric
 Repeat: 25.2"H x 72"V
 Shown: Railroaded
 Non-Woven: 100% flame retardant polyester modified with molecular antimicrobial and water repellent technologies.
 Available as:
 Shield Classic Only



Harvest



Meadow



Wheat



Strawberry

 Due to the printing process, actual colors may vary.



use for
 cubicle & shower curtains
 window treatments
 bedspreads

NEW! Bubbles

Width: 72" fabric

Repeat: 25.2"H x 72"V

Shown: Railroaded

Non-Woven: 100% flame retardant polyester modified with molecular antimicrobial and water repellent technologies.

Available as:
 Shield Classic Only



Primary



Pastel

NEW! Playtime

Width: 54" fabric

Repeat: 4"H x 5"V

Shown: Vertically Seamed

Non-Woven: 100% flame retardant polyester modified with molecular antimicrobial and water repellent technologies.

Available as:
 Shield Classic



Rose



Gold



Due to the printing process, actual colors may vary.



use for
 cubicle & shower curtains
 window treatments
 bedspreads

Bristol

Width: 54" fabric
 Repeat: 25.2" V
 Shown: Vertically Seamed
 Non-Woven: 100% flame retardant polyester modified with molecular antimicrobial and water repellent technologies.
 Available as:
 Shield Classic
 Shield Designer



Blush



Sunrise



Island



Vista

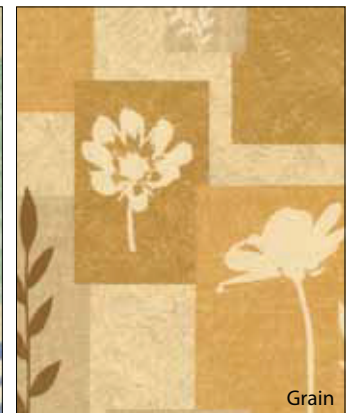


Merlot

Meadow

Chelsea

Width: 54" fabric
 Repeat: 25.2" V
 Shown: Vertically Seamed
 Non-Woven: 100% flame retardant polyester modified with molecular antimicrobial and water repellent technologies.
 Available as:
 Shield Classic
 Shield Designer



Grain



Royal

Iris



Due to the printing process, actual colors may vary.



use for
 cubicle & shower curtains
 window treatments
 bedspreads

Elegant Leaf

Width: 54" fabric
 Repeat: 25.2" V
 Shown: Vertically Seamed
 Non-Woven: 100% flame retardant polyester modified with molecular antimicrobial and water repellent technologies.
 Available as:
 Shield Classic
 Shield Designer



Rich Ivory



Point Blue



Chestnut



Basil

Gentry

Width: 54" fabric
 Repeat: 13.46"H x 12.59"V
 Shown: Vertically Seamed
 Non-Woven: 100% flame retardant polyester modified with molecular antimicrobial and water repellent technologies.
 Available as:
 Shield Classic
 Shield Designer



Sonora



Ocean



Safari



Due to the printing process, actual colors may vary.



use for
 cubicle & shower curtains
 window treatments
 bedspreads

Kensington

Width: 54" fabric

Repeat: 1" V

Shown: Vertically Seamed

Non-Woven: 100% flame retardant polyester modified with molecular antimicrobial and water repellent technologies.

Available as:
 Shield Classic
 Shield Designer



Shield Classic:
 Toffee only



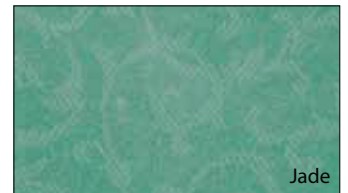
Serenity



Artichoke



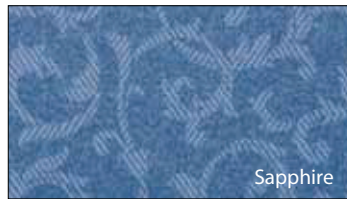
Toffee



Jade



Natural



Sapphire



Sand

Lancaster

Width: 54" fabric

Repeat: 1" V

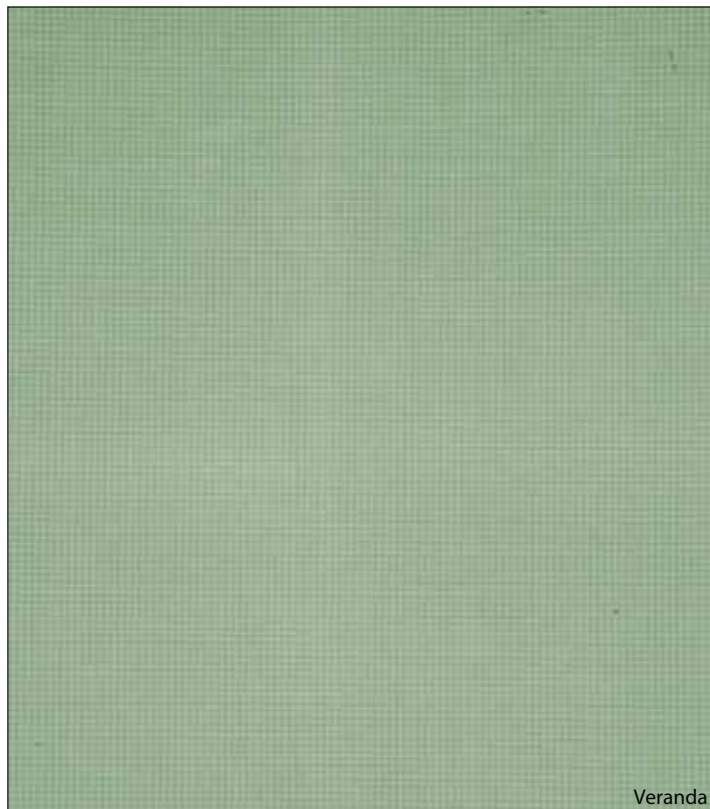
Shown: Vertically Seamed

Non-Woven: 100% flame retardant polyester modified with molecular antimicrobial and water repellent technologies.

Available as:
 Shield Classic
 Shield Designer



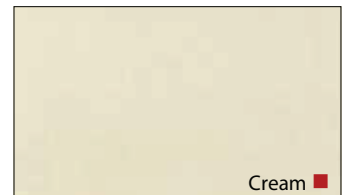
Shield Classic:
 Cream only



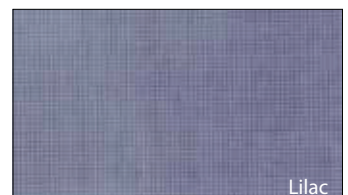
Veranda



Galaxy



Cream



Lilac



Carmel



Due to the printing process, actual colors may vary.



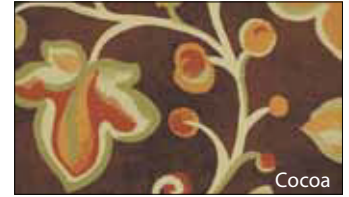
use for
 cubicle & shower curtains
 window treatments
 bedspreads

Mayfair

Width: 54" fabric
 Repeat: 25.2" V
 Shown: Vertically Seamed
 Non-Woven: 100% flame retardant polyester modified with molecular antimicrobial and water repellent technologies.
 Available as:
 Shield Classic
 Shield Designer



Alpine



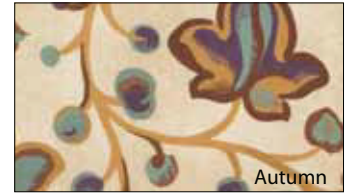
Cocoa



Denim



Cadet



Autumn

Dorchester

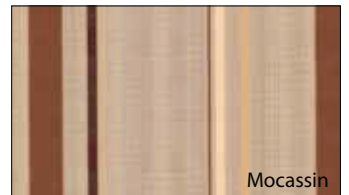
Width: 54" fabric
 Repeat: 13.58" H
 Shown: Vertically Seamed
 Non-Woven: 100% flame retardant polyester modified with molecular antimicrobial and water repellent technologies.
 Available as:
 Shield Classic
 Shield Designer



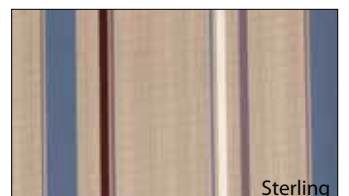
Sonora



Beach Glass



Mocassin



Sterling



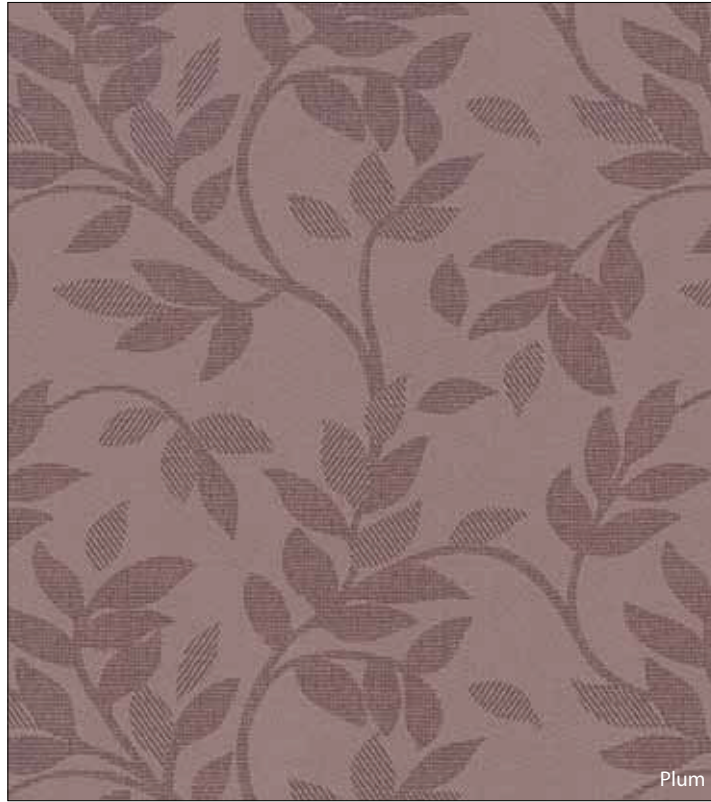
Green Tea



use for
 cubicle & shower curtains
 window treatments
 bedspreads

Nottingham

Width: 54" fabric
 Repeat: 8.97"H x 8.26"V
 Shown: Vertically Seamed
 Non-Woven: 100% flame retardant polyester modified with molecular antimicrobial and water repellent technologies.
 Available as:
 Shield Classic
 Shield Designer



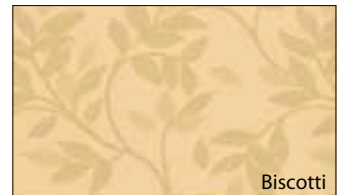
Plum



Sterling



Palomino



Biscotti



Green Tea

Tudor

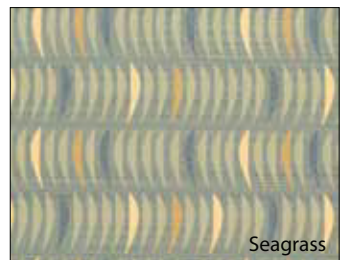
Width: 54" fabric
 Repeat: 13.46"H x 4"V
 Shown: Vertically Seamed
 Non-Woven: 100% flame retardant polyester modified with molecular antimicrobial and water repellent technologies.
 Available as:
 Shield Classic
 Shield Designer



Shield Classic:
 Moccasin only



Moccasin



Seagrass



Sand Dune



Rattan



Due to the printing process, actual colors may vary.



Glengarrif Medical Center, Glen Cove, NY
A. Shield by Panaz™ Cornice Board in Elegant Leaf p.175 | B. Drapery p.172 | C. Shield by Panaz™ Cubicle Curtain in Elegant Leaf p.131



Waukesha Memorial Hospital, Waukesha, WI
A. Shield by Panaz™ Cubicle Curtain in Bristol p.130



Patient Room Hospital
A. Shield by Panaz™ Perspectives Cubicle Curtain p.136



shield Perspectives

protective intelligent fabric
by Panaz™

Perspectives fabrics are stain resistant and antimicrobial, featuring the same technology you've come to expect from standard Shield by Panaz™ fabrics.

Like all Shield fabrics, Perspectives can drastically reduce the overall cost and time associated with changing-out curtains for routine cleaning.

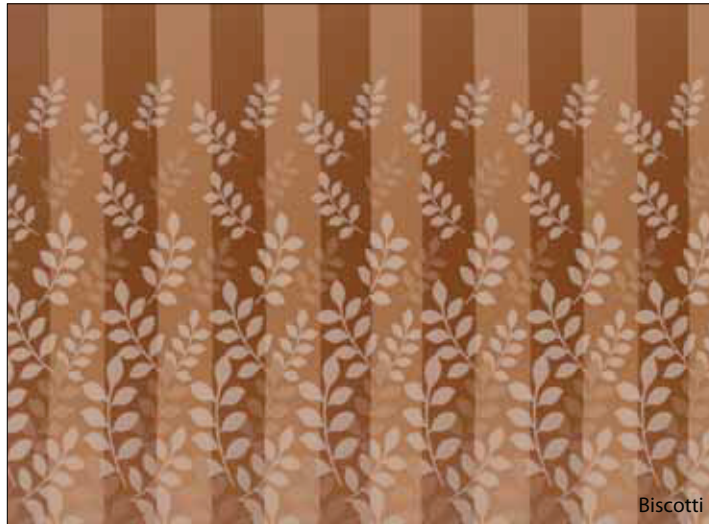


Available in five woven fabrics, featuring **Outline, Reflect, Tableau, Viewpoint and Vista** patterns that perfectly color-coordinate for beautiful window treatments, bedspreads and cubicle curtains.

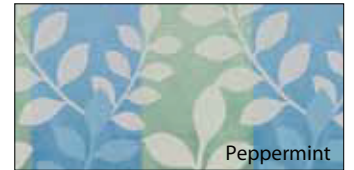


Vista

Width: 63" fabric
Repeat: 15.75" H x 89" V
Shown: Vertically Seamed
Woven: 100% FR Polyester



Biscotti



Peppermint



Sepia



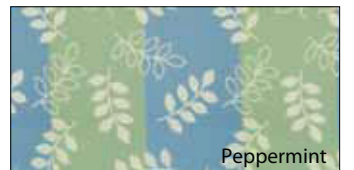
Lemon

Reflect

Width: 63" fabric
Repeat: 15.75" H x 15.75" V
Shown: Vertically Seamed
Woven: 100% FR Polyester



Biscotti



Peppermint



Sepia



Lemon



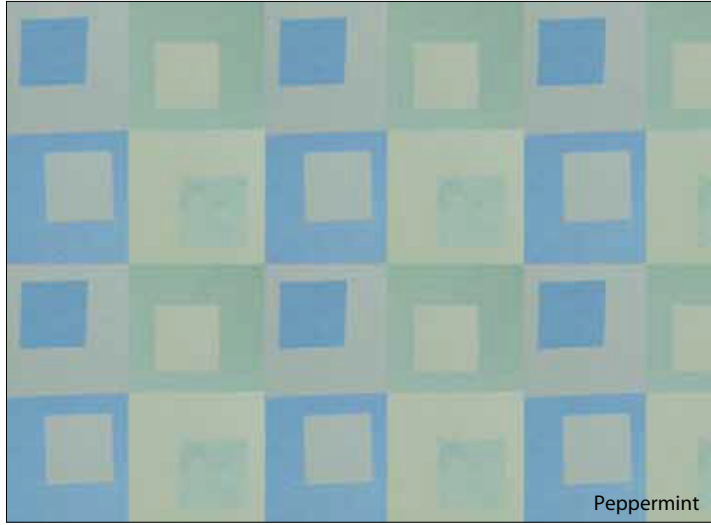
Due to the printing process, actual colors may vary.



use for
 cubicle & shower curtains
 window treatments
 bedspreads

Tableau

Width: 63" fabric
 Repeat: 15.75" H x 15.75" V
 Shown: Vertically Seamed
 Woven: 100% FR Polyester



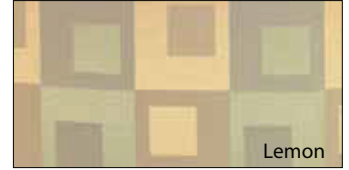
Peppermint



Green



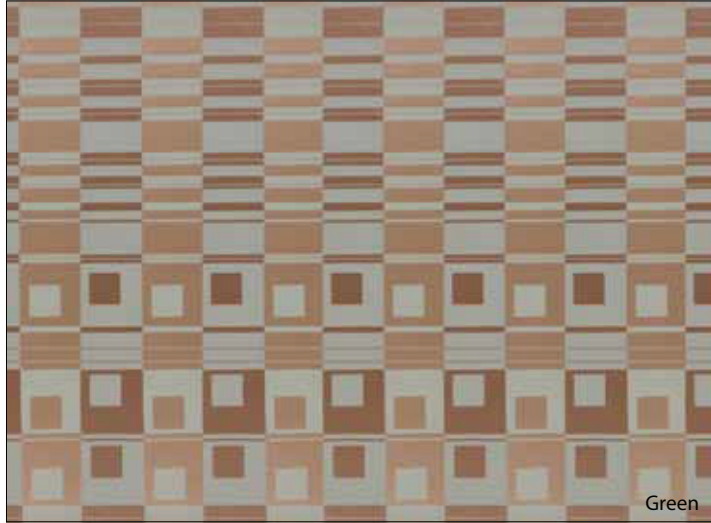
Sepia



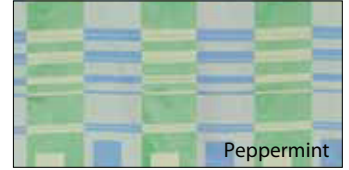
Lemon

Viewpoint

Width: 63" fabric
 Repeat: 15.75" H x 89" V
 Shown: Vertically Seamed
 Woven: 100% FR Polyester



Green



Peppermint



Sepia



Lemon

Outline

Width: 63" fabric
 Repeat: 15.75" H x 23.62" V
 Shown: Vertically Seamed
 Woven: 100% FR Polyester



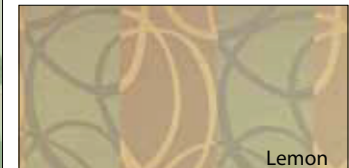
Peppermint



Green



Sepia



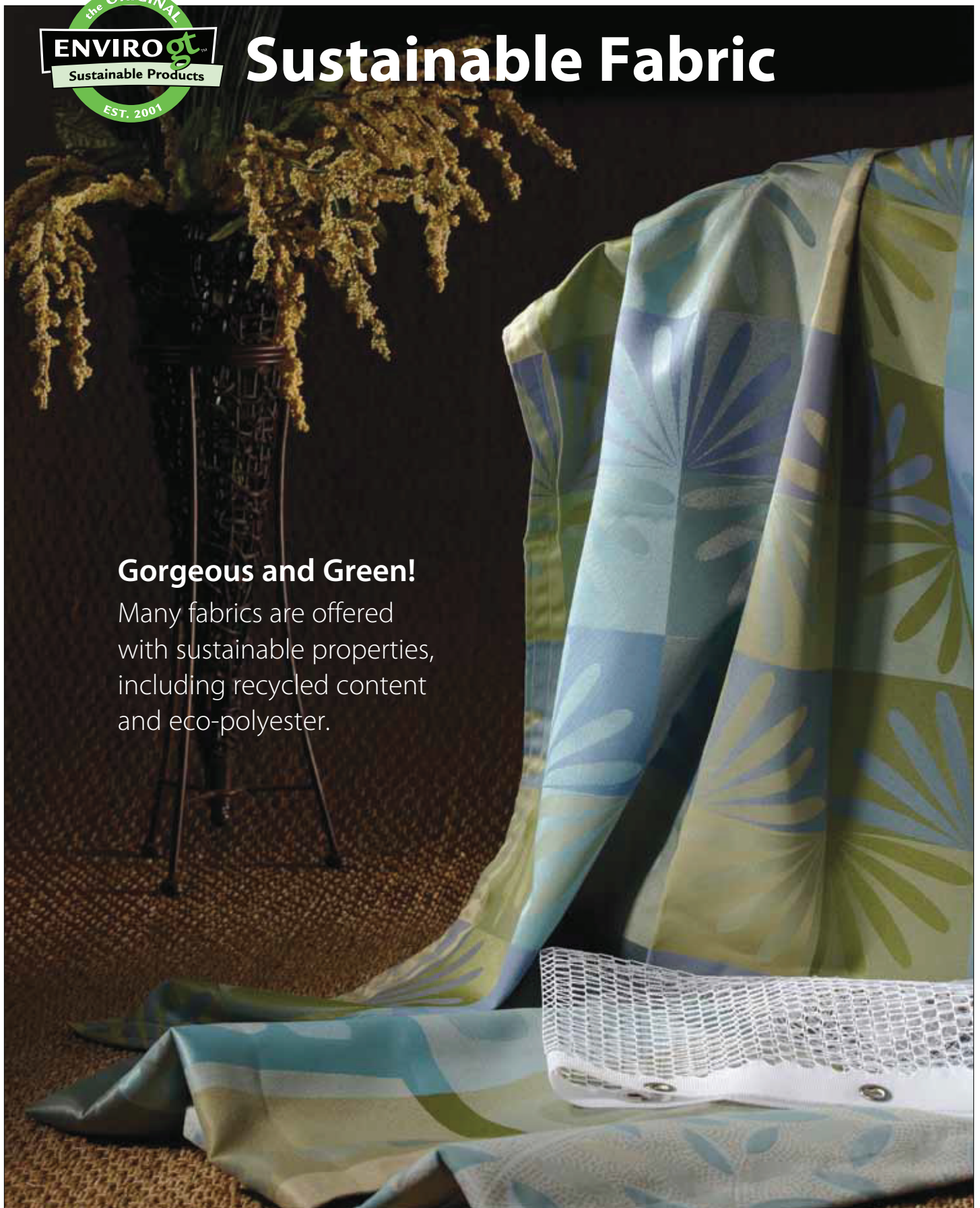
Lemon



Sustainable Fabric

Gorgeous and Green!

Many fabrics are offered with sustainable properties, including recycled content and eco-polyester.

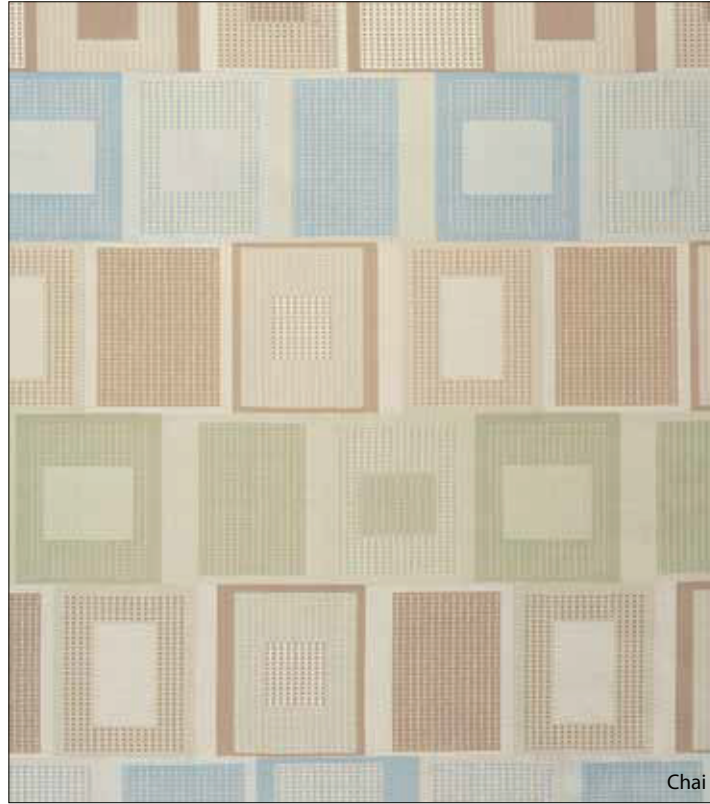




use for
cubicle & shower curtains
window treatments

Boxy

Woven: 100% Eco Polyester
Width: 72" fabric
Repeat: 14.2" H x 41" V
Shown: Vertically Seamed



Chai



Chutney



Fresco



Truffle

New Leaf

Woven: 100% Eco Polyester
Width: 76" fabric
Repeat: 7" H x 13.5" V
Shown: Railroaded



Rest



Dawn



Lilac



Peace



Terre



Bliss

Due to the printing process, actual colors may vary.



use for cubicle & shower curtains window treatments

Alfresco

Width: 74" fabric

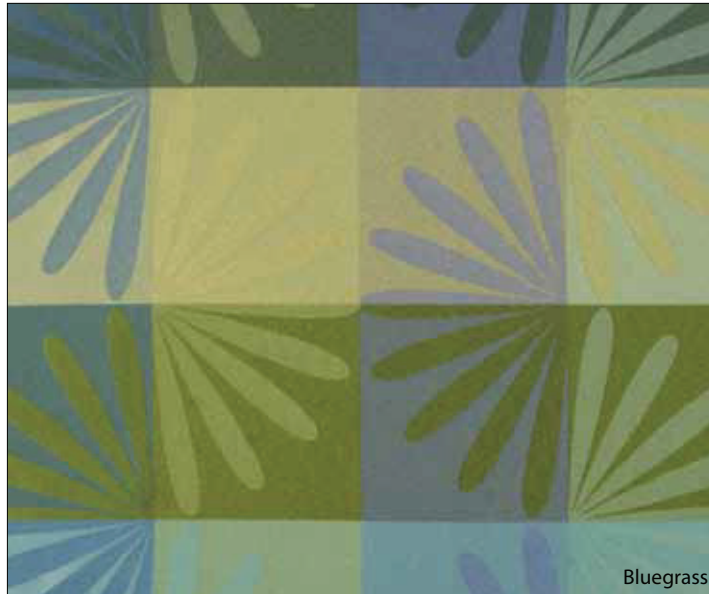
Repeat: 18" H x 18" V

Shown: Vertically Seamed

Woven: 52% Post-Consumer Recycled FR Polyester, 48% FR Polyester



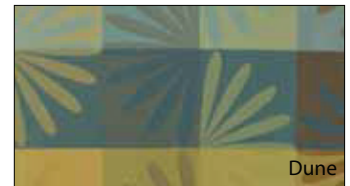
Alfresco, Courtyard, Mesa and Plaza patterns perfectly color-coordinate for beautiful window treatment and cubicle curtain selections



Bluegrass



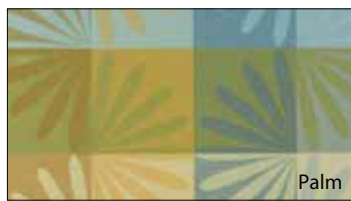
Orchid



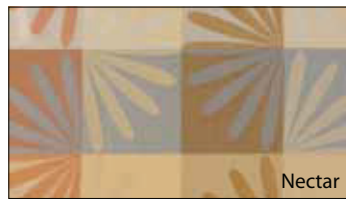
Dune



Spice



Palm



Nectar



Ginger

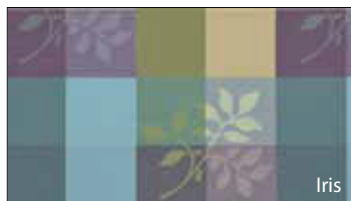
Courtyard

Width: 74" fabric

Repeat: 18" H x 17.5" V

Shown: Vertically Seamed

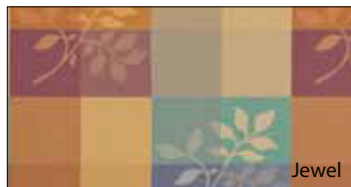
Woven: 52% Post-Consumer Recycled FR Polyester, 48% FR Polyester



Iris



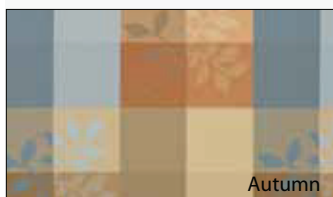
Tide



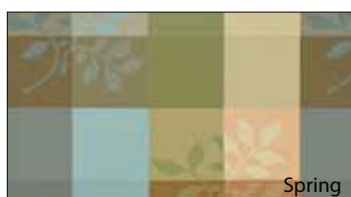
Jewel



Desert



Autumn



Spring



Canyon



Dawn

Due to the printing process, actual colors may vary.



Fabric | Sustainable Fabric



use for
cubicle & shower curtains
window treatments

Fabric | Sustainable Fabric

Mesa

Width: 74" fabric

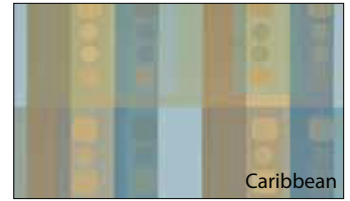
Repeat: 37" H x 36" V

Shown: Vertically Seamed

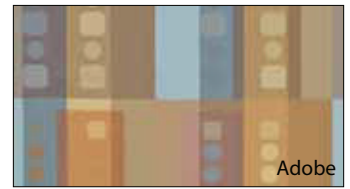
Woven: 52% Post-Consumer
Recycled FR Polyester,
48% FR Polyester



Sea Breeze



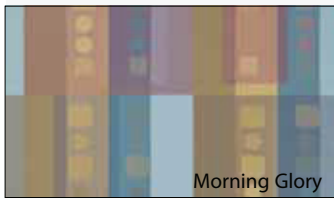
Caribbean



Adobe



Dune



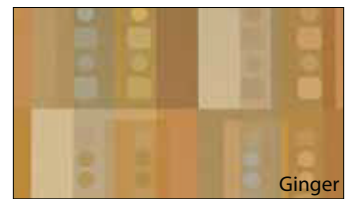
Morning Glory



Siesta



Spring



Ginger

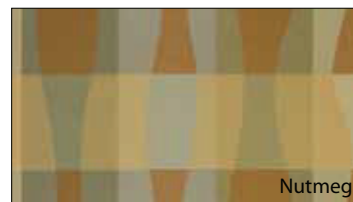
Plaza

Width: 74" fabric

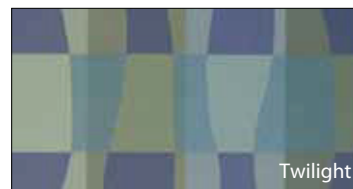
Repeat: 18" H x 45" V

Shown: Vertically Seamed

Woven: 52% Post-Consumer
Recycled FR Polyester,
48% FR Polyester



Nutmeg



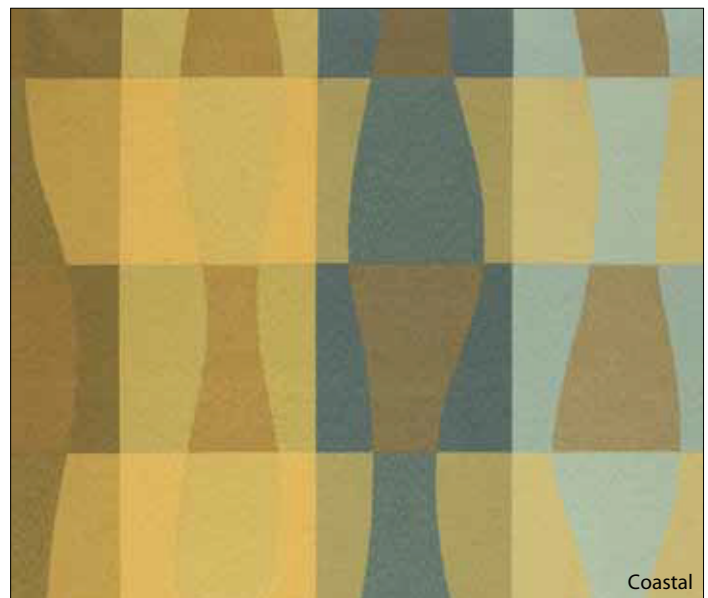
Twilight



Sea Mist



Adobe



Coastal



Surf



Green Tea

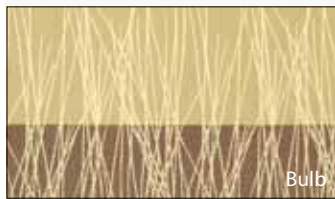


Due to the printing process, actual colors may vary.



Audobon

Width: 72" fabric
Repeat: 28" H x 76" V
Shown: Vertically Seamed
Woven: 100% Trevira CS Polyester



Bulb



Stem



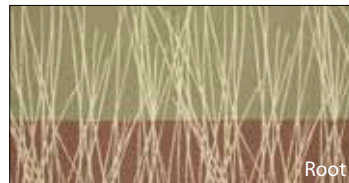
Pollen



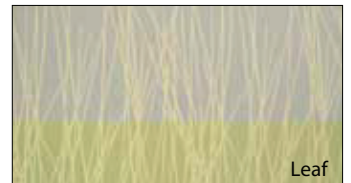
Petal



Nectar



Root



Leaf



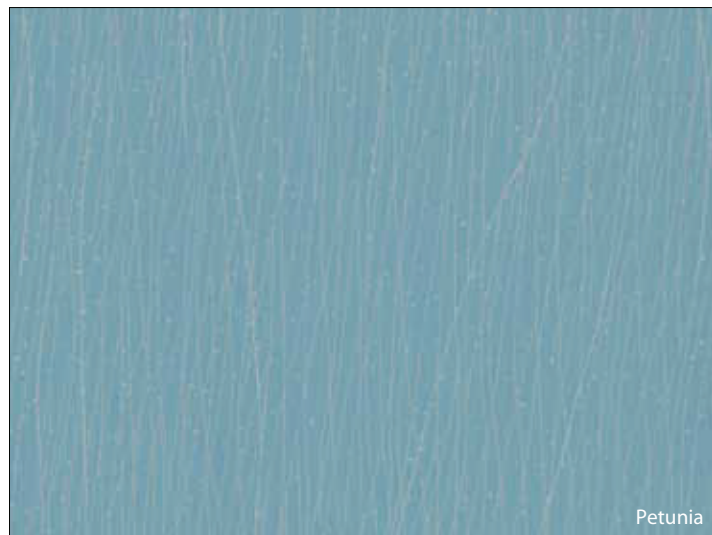
Blossom



Floret

Blissful

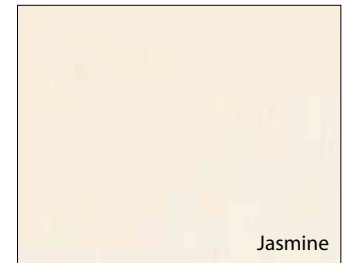
Width: 71" fabric
Repeat: 10.5" H x 14" V
Shown: Railroaded
Woven: 100% Trevira CS Polyester



Petunia



Poppy



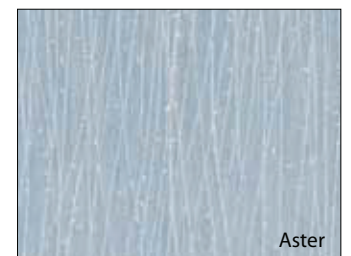
Jasmine



Meadow



Topiary



Aster



Due to the printing process, actual colors may vary.



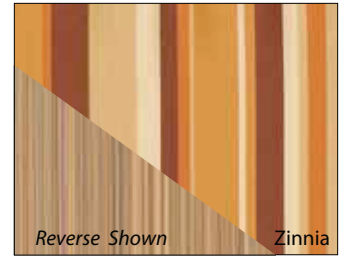
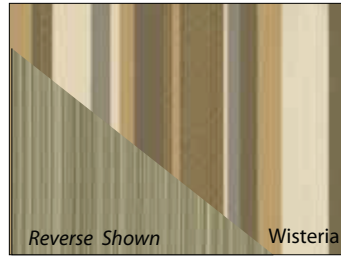
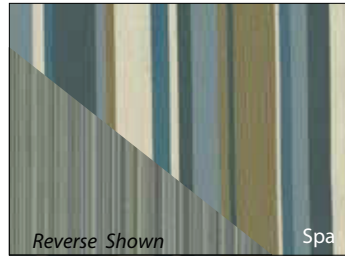
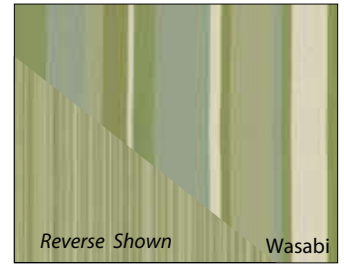
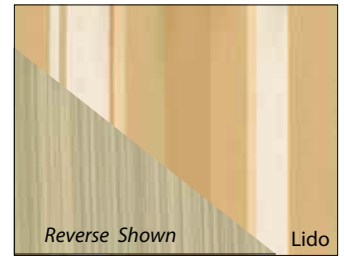
Boulevard

Width: 72" fabric

Repeat: 17.5" H x 0" V

Shown: Railroaded

Woven: 100% Trevira CS Polyester



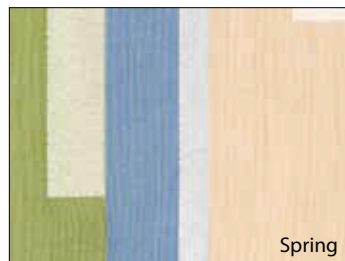
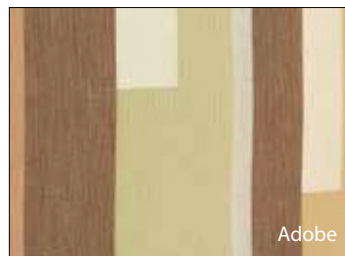
Broadstripe

Width: 74" fabric

Repeat: 11.5" H x 28.75" V

Shown: Railroaded

Woven: 100% FR Polyester



Due to the printing process, actual colors may vary.



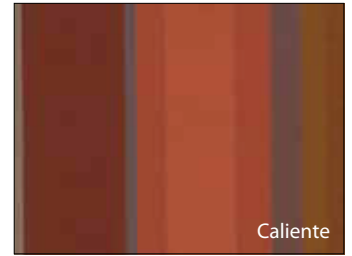
Cityscape

Width: 72" fabric

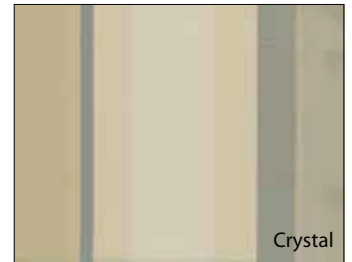
Repeat: 18.5" H x 0" V

Shown: Vertically Seamed

Woven: 100% FR Polyester



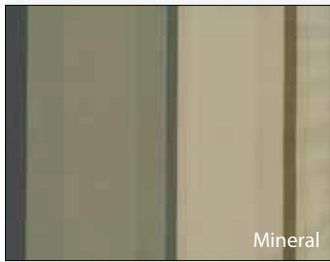
Caliente



Crystal



Lagoon



Mineral

Calistoga

Daydream

Width: 72" fabric

Repeat: 18.75" H x 18.125" V

Shown: Railroaded

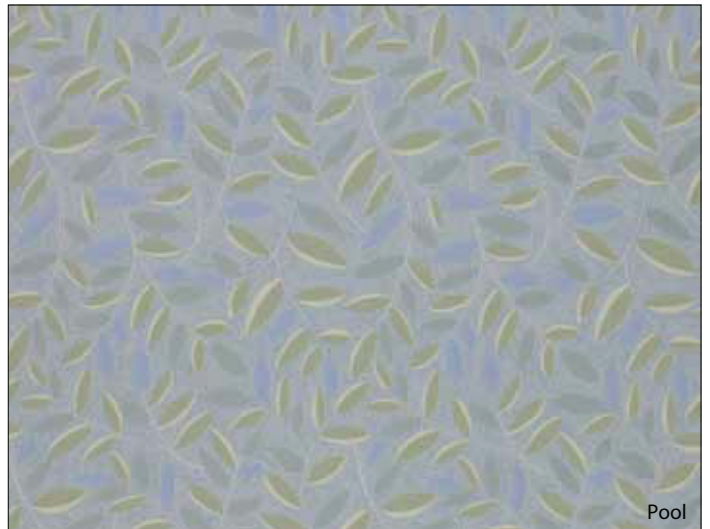
Woven: 100% Avora FR Polyester



Terre



Harvest



Pool



Daydream



Lakeshore



Bonsai

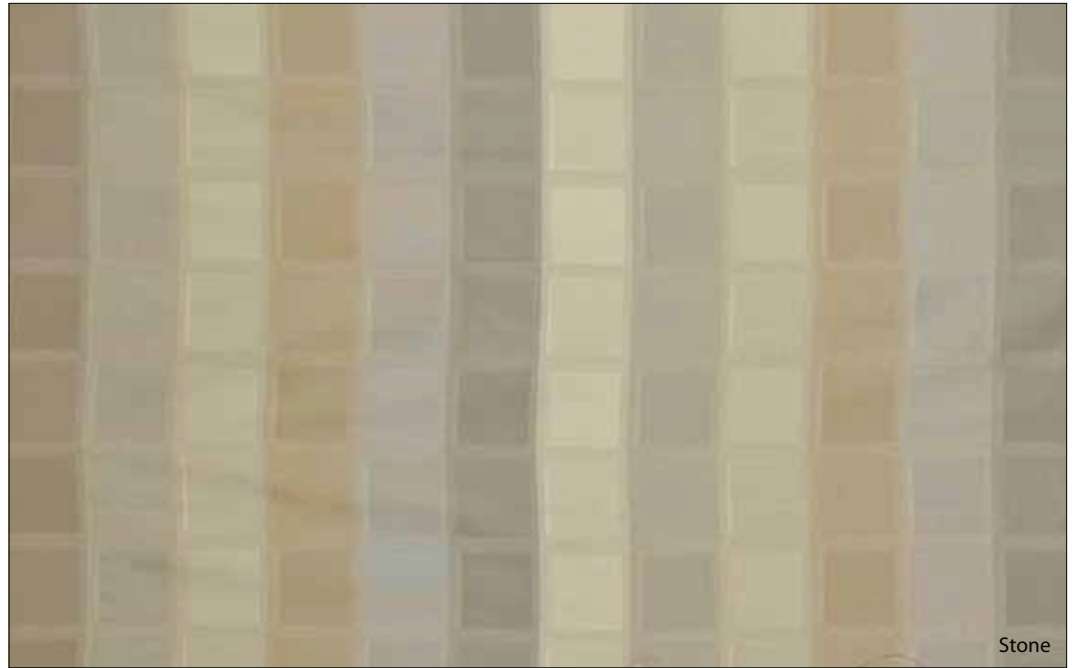


Due to the printing process, actual colors may vary.



Estate

Width: 72" fabric
Repeat: 72" H x 10.75" V
Shown: Vertically Seamed
Woven: 50% Trevira CS Bioactive Polyester, 50% Polyester



Stone



Moss



Horizon



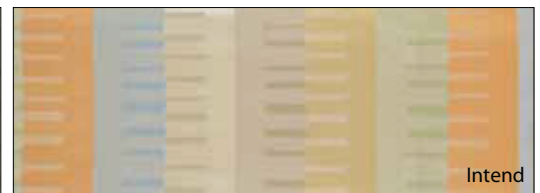
Lagoon

Evolution

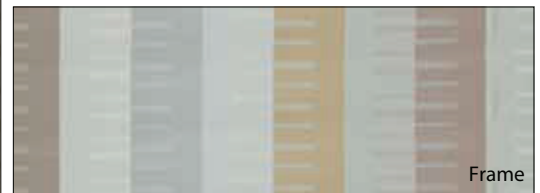
Width: 72" fabric
Repeat: 72" H x 3.125" V
Shown: Vertically Seamed
Woven: 50% Trevira CS Bioactive Polyester, 50% Polyester



Fossil



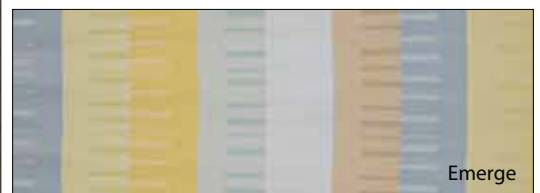
Intend



Frame



Delight



Emerge



Due to the printing process, actual colors may vary.



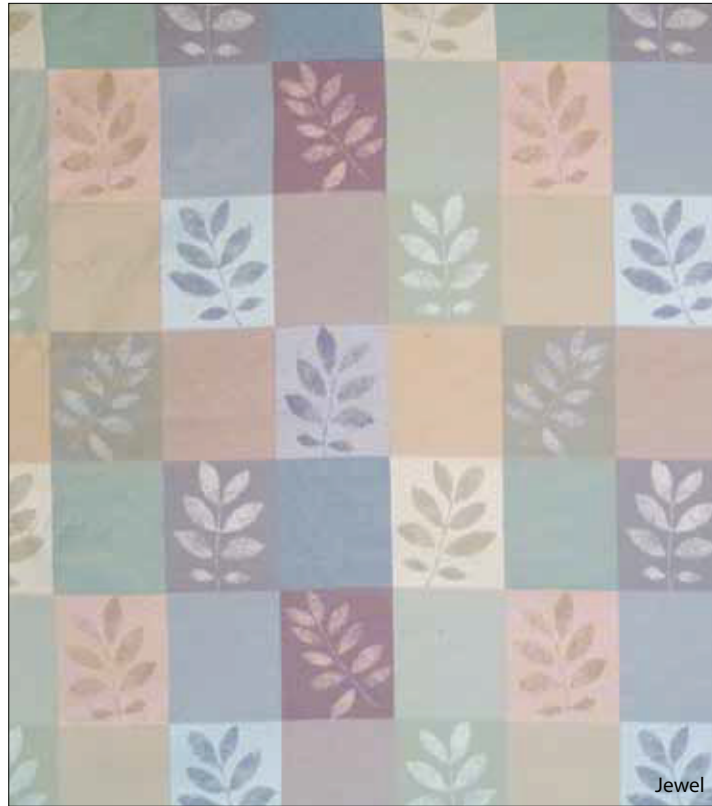
Imprint

Width: 72" fabric

Repeat: 18.5" H x 22.5" V

Shown: Vertically Seamed

Woven: 100% Avora FR Polyester



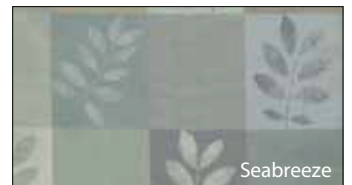
Jewel



Harvest



Mist



Seabreeze



Spring

Gossamer

Width: 54" fabric

Repeat: 14.00" H x 18.50" V

Shown: Vertically Seamed

Woven: 100% Trevira CS Polyester



Strawberry



Peach



Sorbet

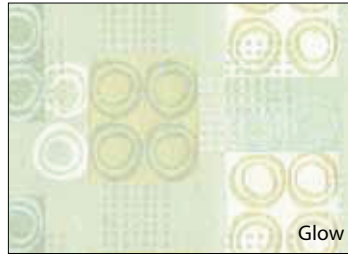


Due to the printing process, actual colors may vary.



Rings

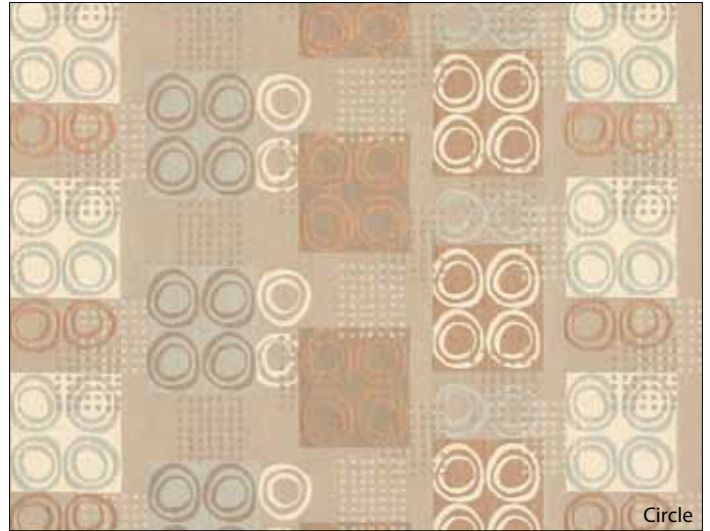
Width: 72" fabric
Repeat: 9.3" H x 26.89" V
Shown: Railroaded
Woven: 100% FR Polyester



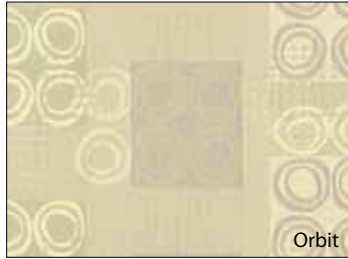
Glow



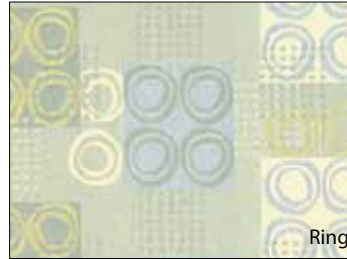
Lunar



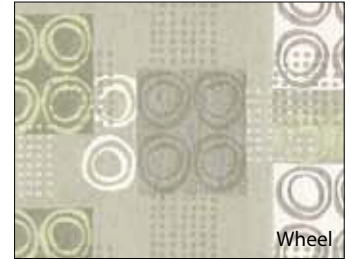
Circle



Orbit



Ring



Wheel

Wild Flower

Width: 74" fabric
Repeat: 94" H x 74" V
Shown: Railroaded
Woven: 100% FR Polyester



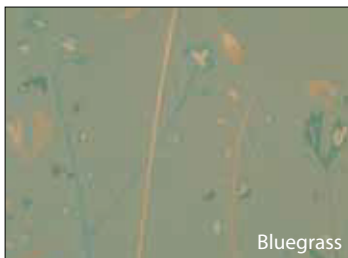
Chamomile



Nectar



Seabreeze



Bluegrass



Grain



Herb

Due to the printing process, actual colors may vary.



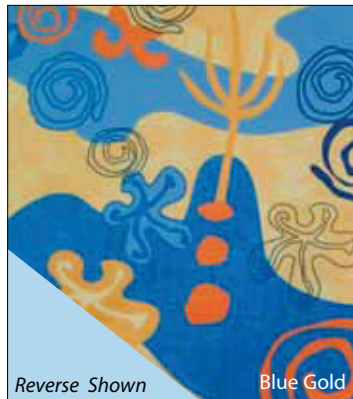
Sea Life

Width: 54" fabric

Repeat: 25" V

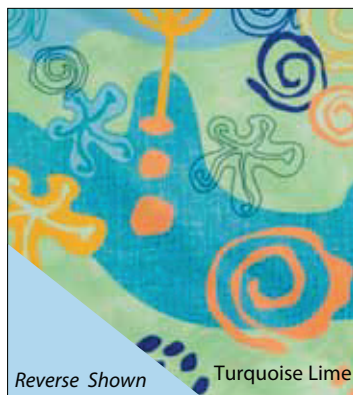
Shown: Vertically Seamed

Woven: 100% Polyester FR



Reverse Shown

Blue Gold



Reverse Shown

Turquoise Lime



Pediatric Care Room

A. Sea Life Cubicle Curtain

B. Tile Works Bedsread

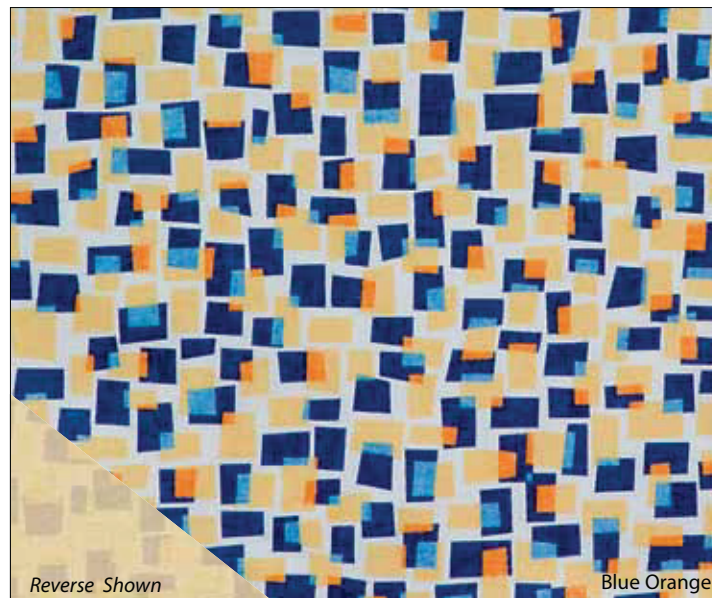
Tile Works

Width: 54" fabric

Repeat: 18" V

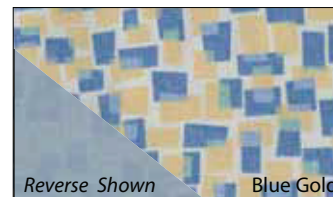
Shown: Vertically Seamed

Woven: 100% Polyester FR



Reverse Shown

Blue Orange



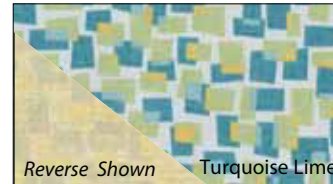
Reverse Shown

Blue Gold



Reverse Shown

Lilac



Reverse Shown

Turquoise Lime



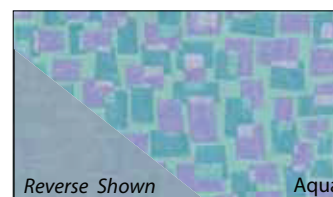
Reverse Shown

Soft Green



Reverse Shown

Gold



Reverse Shown

Aqua



Due to the printing process, actual colors may vary.



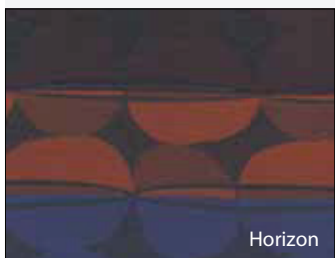
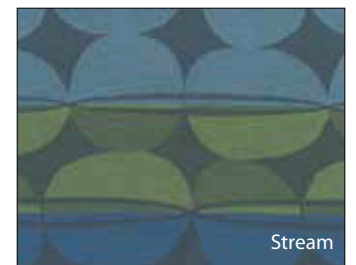
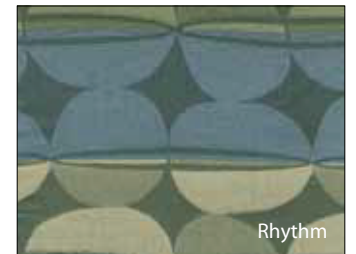
NEW! In The Moment

Width: 72" fabric
Repeat: 18.25" H x 13.5" V
Shown: Vertically Seamed
Woven: 87% Polyester, 13% Avora
FR Polyester



NEW! Riverstone

Width: 72" fabric
Repeat: 8.25" H x 15" V
Shown: Vertically Seamed
Woven: 62% Trevira FR Polyester,
38% Post-Consumer Recycled
Polyester





Blossom

Width: 72" fabric

Repeat: 14.5" H x 13.75" V

Shown: Railroaded

Woven: 100% Avora FR Polyester



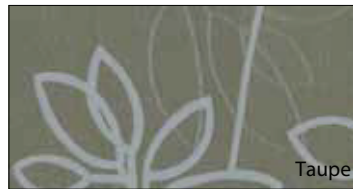
Periwinkle



Sand



Pear



Taupe



Shale



Sky



Ivory



Sage



Plum



Oro

Endless Summer

Width: 74" fabric

Repeat: 74" H x 69" V

Shown: Railroaded

Woven: 100% Trevira FR Polyester



Willow



Cobalt



Taupe



Linen



Due to the printing process, actual colors may vary.